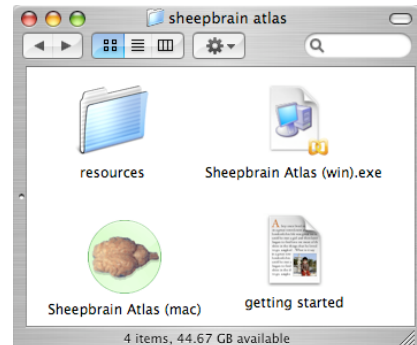


Sheepbrain Atlas/Quiz

-- John Kubie, Dept of Anatomy & Cell Biology, Downstate (jkubie@downstate.edu)

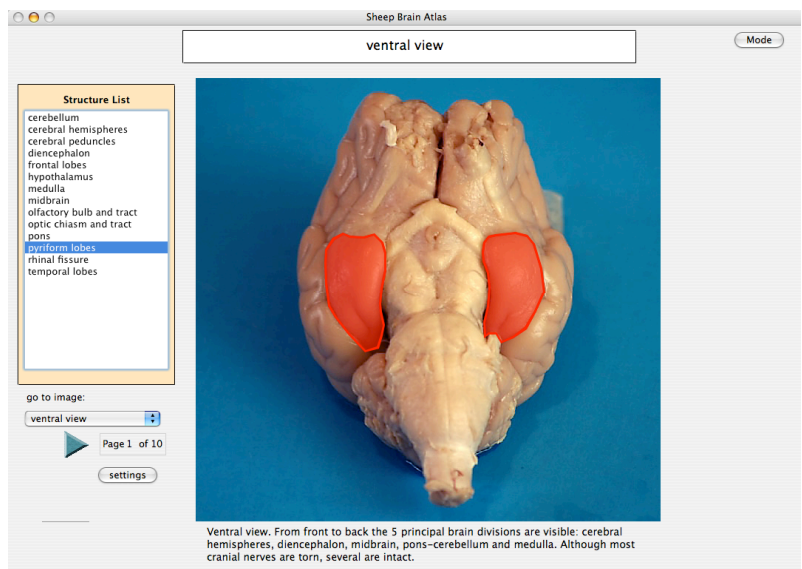
Installing and running the Software.

Essential files are found in a folder called "Sheepbrain Atlas". This folder can be copied to your hard disk and placed anywhere, but the programs must remain in the folder. Double-clicking **Sheepbrain Atlas (mac)** or **(win)** will launch the program. An alias or shortcut to the program file can be placed convenience place, such as the desktop.



The atlas will launch and look something like this:

This is a two-way atlas. Clicking on a structure in the structure list will cause the structure to highlight. Clicking on a structure on the photo will cause its name to highlight.

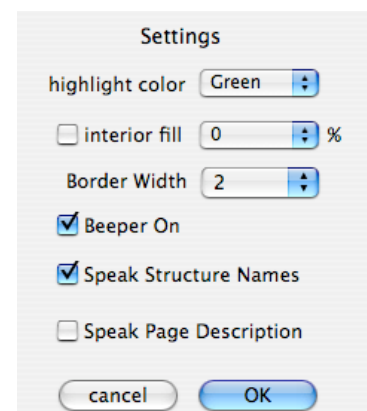


Settings:

Clicking on the Settings button shows the settings dialog.

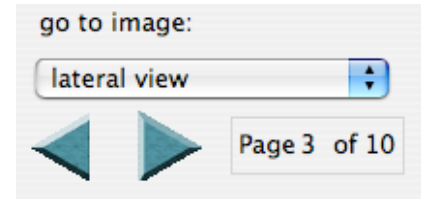
Beeper On will cause an audible beep for correct and incorrect choices in quiz mode. Turn off if you don't want to bother neighbors.

Speak Structure Names will cause structure names to be spoken by the computer, as well as quiz instructions and summaries. **Speak Page descriptions** will cause the text at



the bottom of a page to be spoken.

When you are in "Atlas" mode, you can navigate to different pages. This can be done with the arrow buttons or the popup window.

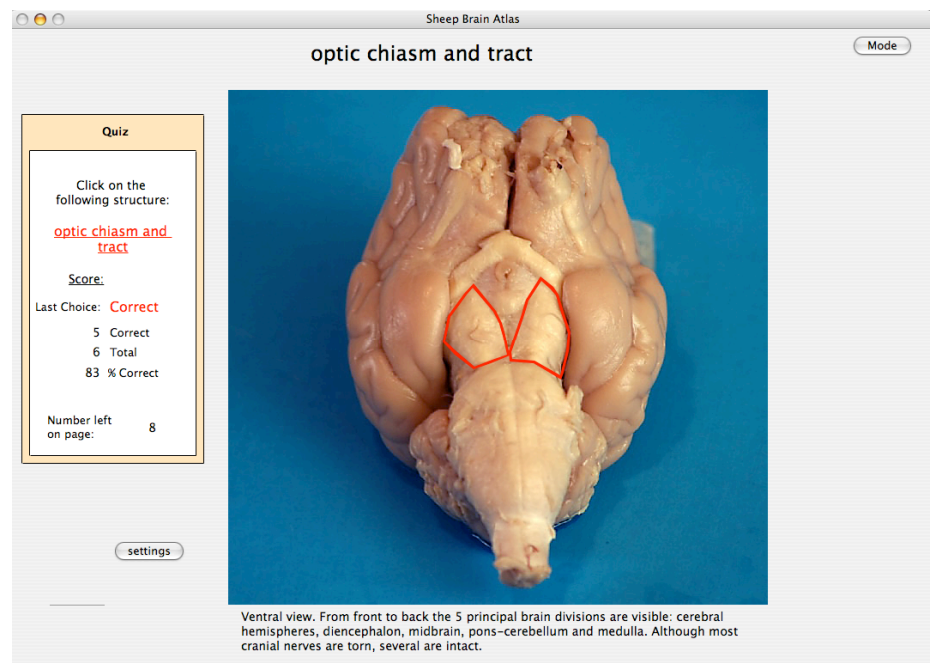
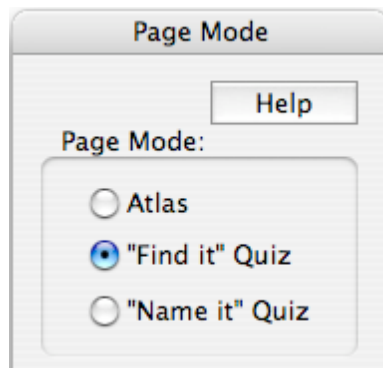


Atlas mode and Quiz Modes

When you first launch the program it is in Atlas mode. You can be switched to Quiz mode by pressing the mode button (top right) and making a "Quiz" selection.

"Find It" Quiz:

Running quiz type 1 ought to be self-evident. Currently, the quiz can only run one page at a time. To navigate to other pages you must return to Atlas mode.

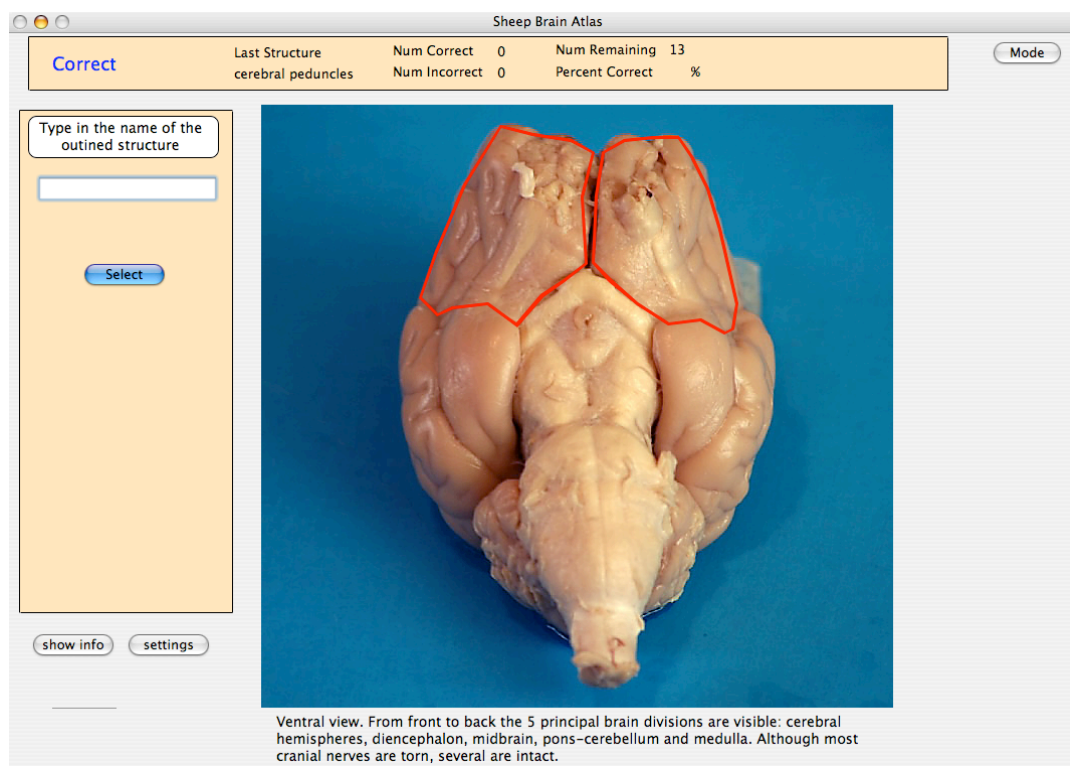
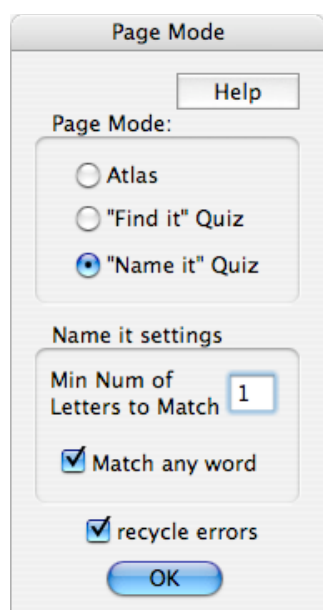


“Name It” Quiz

When you select “Name it Quiz”, the choice dialog looks like the dialog box, on the left below.

You have options to change the number of letters to match and whether to match any word in the name or only the first word. Let’s start with the defaults of 1 letter and “match any word”.

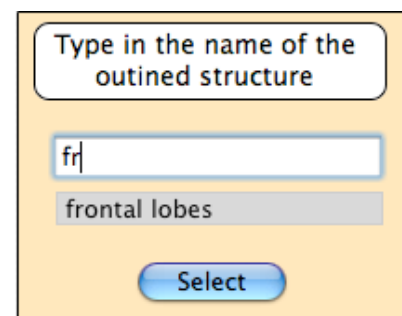
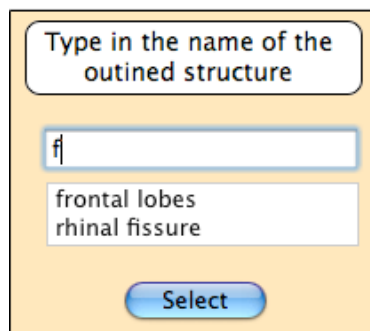
The page then looks like this:



To answer, you start typing the name of the structure. The correct answer is frontal lobes. If I type in the first letter, the following will be displayed:

“frontal lobes” and “rhinal fissure” are matches because each contains one word beginning with “f”.

I can continue typing or click on my selection. I chose to type an “r”. Now only “frontal lobes” matches. When



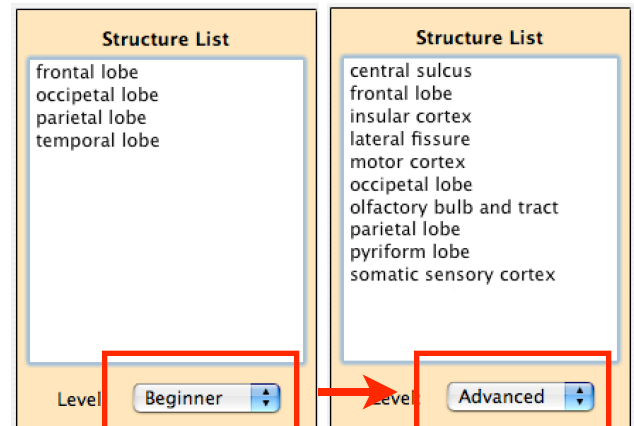
there is only one match, it can be selected by hitting the “return” key.

Quiz type 2 is more challenging than quiz type 1 because you must generate the names. You can control the difficulty by changing the number of letters that must match before hints are displayed. When the number is very high, you must know the entire name perfectly. When the number is low, it is easier. When the number is zero, the entire list of structures will be displayed.

Beginner and Advanced Levels

Beginner and Advanced levels are available. The difference is the number of structures shown. At right you can see that changing from beginner (left) to advanced (right) increases the number of structures from 4 to 10.

Although one can only change level in Atlas mode, the current level applies to all modes and continues when going from image to image.



State of Development

The quiz software was thoroughly rewritten this past year. Please report any difficulties or suggestions to John Kubie (jkubie@downstate.edu or jkubie@mac.com).

Text-to-speech

Be aware that the structure pronunciations have been optimized for macs and windows computers, but pronunciation is far from perfect.

Privacy

If you are in a public location and are using audio feedback (beeps) or are using structure pronunciation, it may be a good idea to use headphones. Standard headphones will plug into most computers.

Monitor resolution

The modules are written for screen resolutions of 1024x768 or greater (1024 pixels horizontal; 768 pixels vertical). If you find that the program does not fit on your computer screen, you may have to alter the computers' screen resolution.

Terms of Use

The Sheepbrain Atlas-Quiz is free. You may freely use it and distribute it for non-profit educational purposes.